

Elections
come and go.
Results last
a lifetime.

A review of
U.S. presidential
elections





“The only limit to our realization of tomorrow will be our doubts of today.”

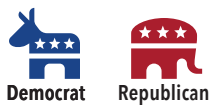
– Franklin D. Roosevelt

Set your sights on the long term

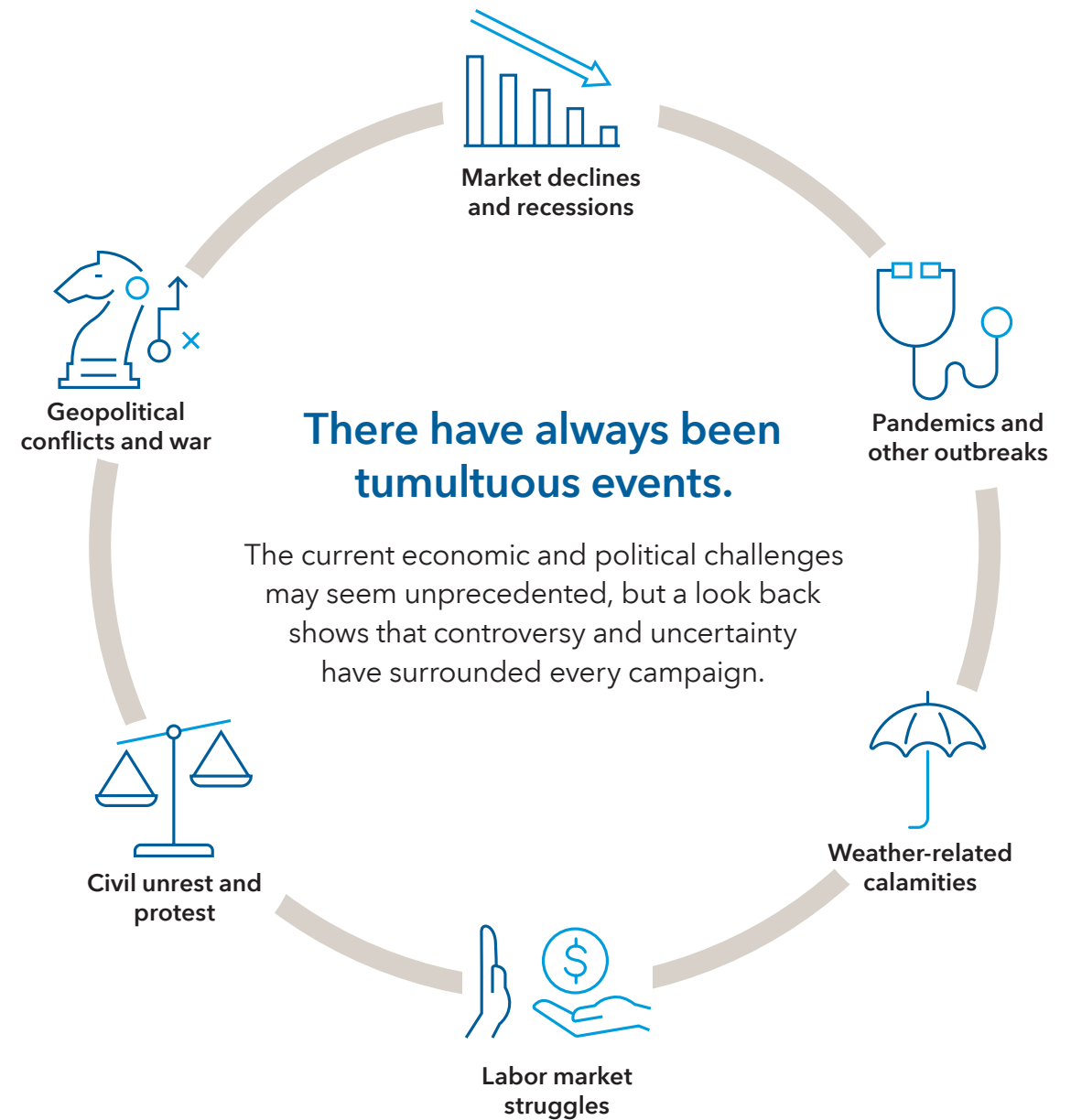
Investor doubts may seem especially prevalent during presidential election years when campaigns spotlight the country’s challenges. Yet even with election year rhetoric amplifying the negative, it’s important to focus on your vision for the future.

Keep in mind the following:

- Successful long-term investors stay the course and rely on time rather than timing.
- Investment success has depended more on the strength and resilience of the American economy than on which candidate or party holds office.
- The experience and time-tested process of your investment manager can be an important contributor to your long-term investment success.



1936	1940	1944	1948	1952	1956	1960	1964	1968	1972	1976
U.S. remains in grip of Depression Nazi rise troubles Europe	Isolationism vs. engagement hotly debated Germany menaces Europe; France falls	FDR's health in question Potential Post-War impact of New Deal debated	Civil rights tension boils over at convention Berlin blockade accelerates Cold War	U.S. detonates first hydrogen bomb Attempts at Korean War truce fail	Mideast trouble as Egypt seizes Suez Canal Soviets invade Hungary	Cuba nationalizes U.S. assets American U-2 spy plane shot down in Soviet airspace	Civil Rights Act passes after lengthy filibuster Gulf of Tonkin signals Vietnam involvement	Vietnam protests and civil rights issues roil conventions RFK and Martin Luther King Jr. assassinated	Watergate scandal surfaces Vietnam War drags on	New York City threatens bankruptcy Economy mired in recession



1980	1984	1988	1992	1996	2000	2004	2008	2012	2016	2020
Iran hostage crisis drags on Olympic boycott underscores Cold War divide	Budget deficits rising rapidly Stock market slides over 30% in less than four months	Savings and loan crisis reaches apex Iran-Contra indictments	Los Angeles riots highlight racial tension Pending NAFTA ratification creates anxiety	19 American servicemen killed in Saudi Arabia bombing UN arms inspectors repeatedly thwarted in Iraq	Tech bubble bursts; stock markets plummet Attack on USS Cole heightens terrorism concerns	Oil prices soar Ongoing wars in Iraq and Afghanistan	Subprime mortgage crisis Lehman Brothers collapse; world markets fall	High-stakes negotiations lead to a deal to avert the "fiscal cliff" Superstorm Sandy kills 268 people and causes \$68 billion in damage	Rise of populism affects elections around the world The U.K. votes to leave the European Union	Pandemic causes millions of deaths and shuts down global economy Unrest over racial inequality sparks protests worldwide

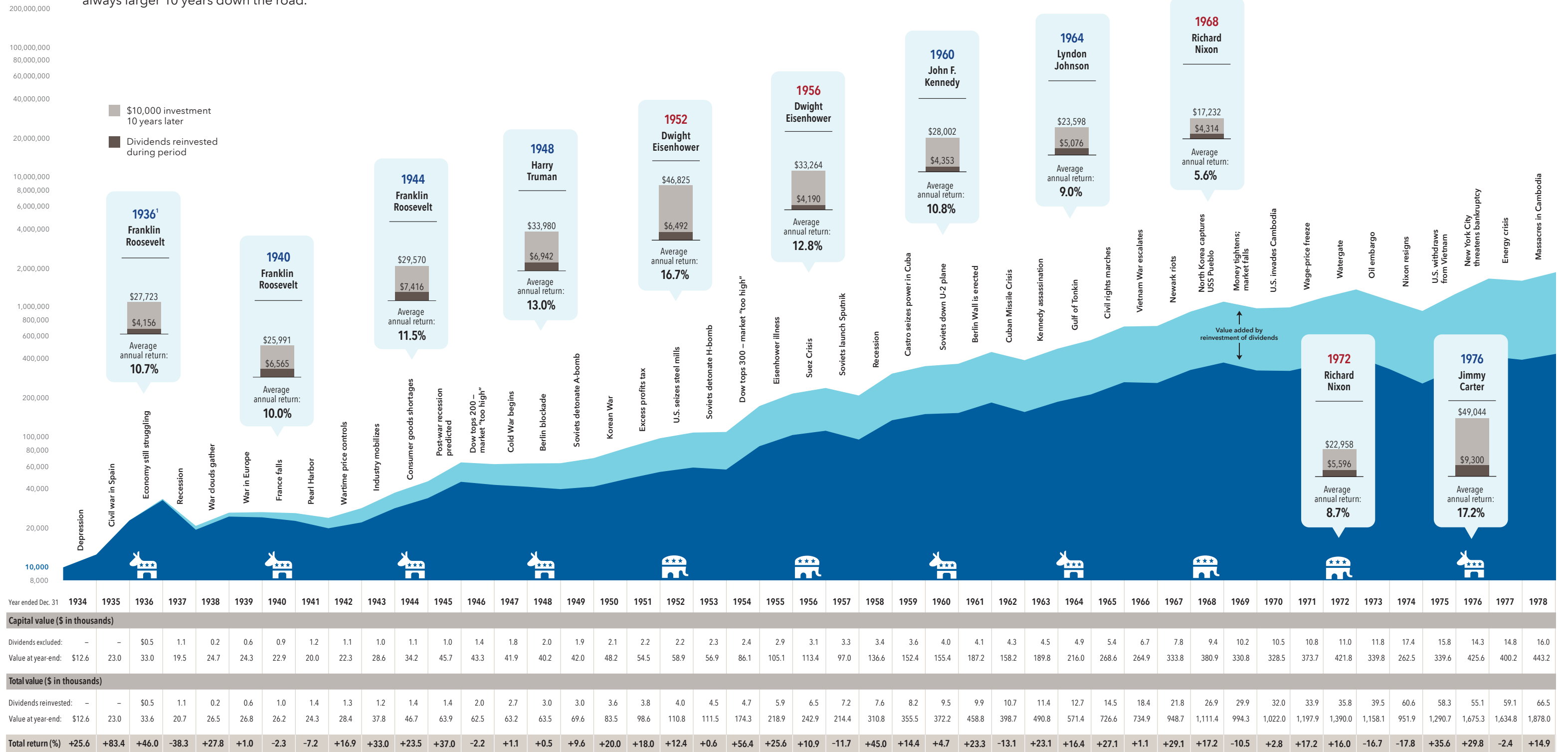
Investments are not FDIC-insured, nor are they deposits of or guaranteed by a bank or any other entity, so they may lose value.

The Investment Company of America®

22 elections and counting

As you can see in the mountain chart below, a hypothetical \$10,000 investment in The Investment Company of America has grown steadily and significantly over the fund's 89-year history.

Additionally, a hypothetical \$10,000 investment in ICA made at the beginning of an election year was always larger 10 years down the road.



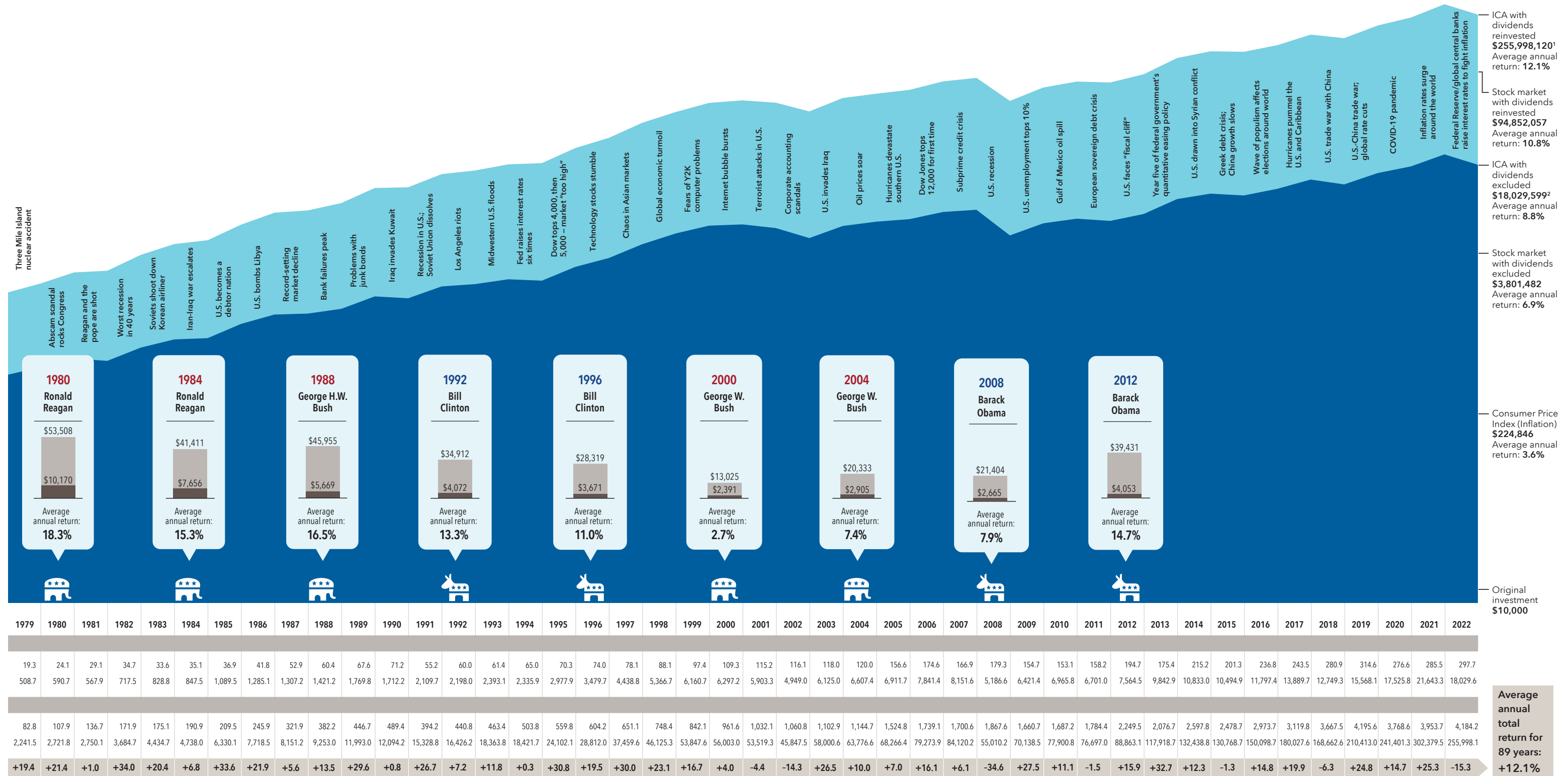
Sources: Capital Group, Standard & Poor's. Dividend calculations sourced from Refinitiv InvestmentView+.

Class F-2 shares were first offered on August 1, 2008. Class F-2 share results prior to the date of first sale are hypothetical based on Class A share results without a sales charge, adjusted for estimated annual expenses. The results shown are before taxes on fund distributions and sale of fund shares. Past results are not predictive of results in future periods. Results for other share classes may differ.

Here are ICA's average annual total returns on a \$1,000 investment with all distributions reinvested for periods ended June 30, 2023:

	1 year	5 years	10 years
Class F-2 shares	21.61%	10.05%	11.48%

Figures shown are past results for Class F-2 shares with all distributions reinvested and are not predictive of results in future periods. Current and future results may be lower or higher than those shown. Prices and returns will vary, so investors may lose money. Investing for short periods makes losses more likely. For current information and month-end results, refer to capitalgroup.com.



Expense ratio was **0.38%** as of the fund's prospectus available at the time of publication. When applicable, investment results reflect fee waivers and/or expense reimbursements, without which results would be lower. Refer to capitalgroup.com for more information.

The stock market is represented by the **S&P 500 Index**, a market capitalization-weighted index based on the results of approximately 500 widely held common stocks. The index is unmanaged and, therefore, has no expenses. Investors cannot invest directly in an index. There have been periods when the fund has lagged the index.

¹ Investment results shown are for 10-year periods beginning on January 1 of the year shown.
² Includes dividends of \$61,384,311, and capital gain distributions totaling \$133,379,215, reinvested in the years 1936–2022.
³ Includes reinvested capital gains of \$11,974,227, but does not reflect income dividends of \$5,827,007 taken in cash.

Growth of a hypothetical \$10,000 investment made at the beginning of an election year



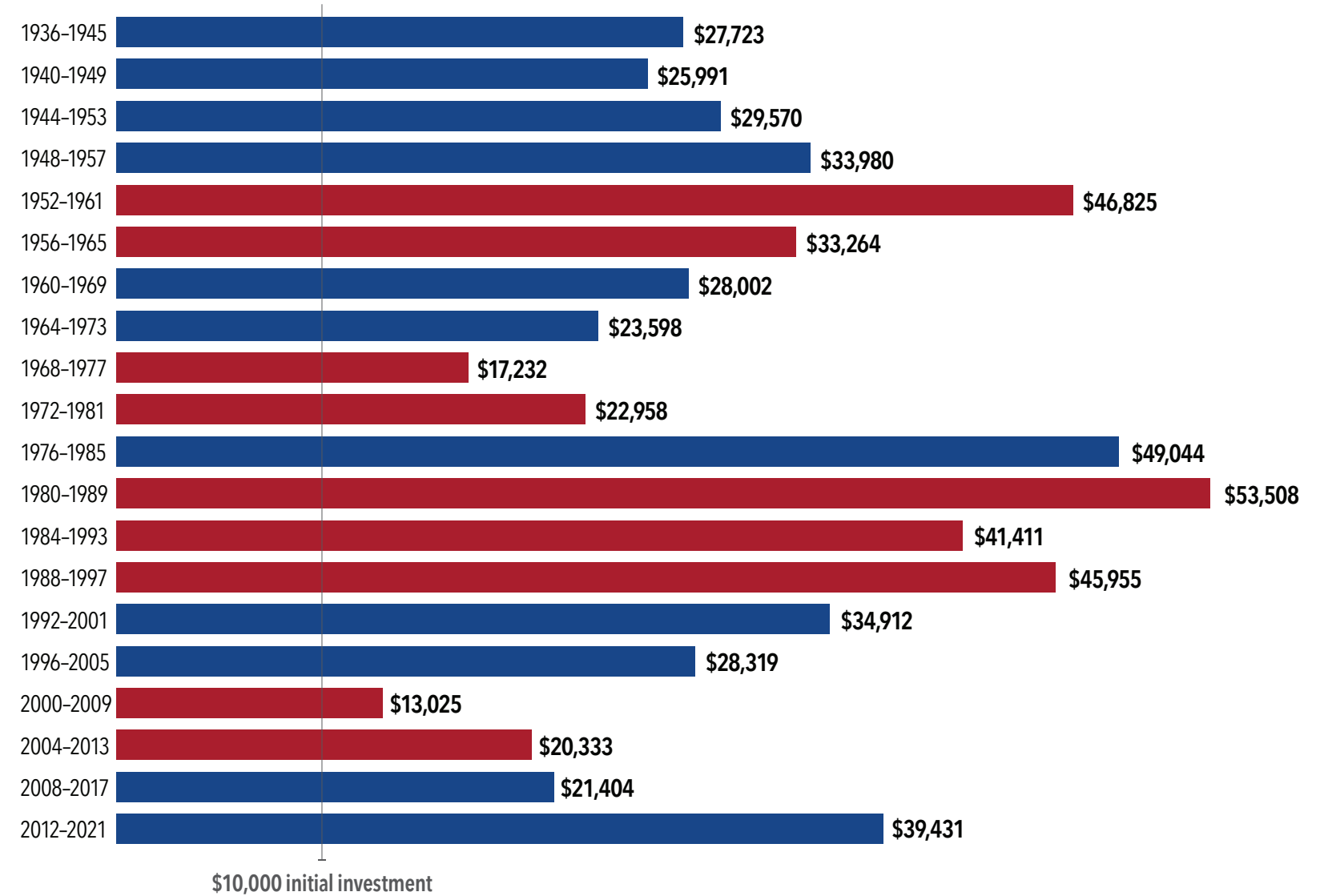
ICA total ending value
10 years after the start of
a Democratic presidency



ICA total ending value
10 years after the start of
a Republican presidency

In 20 of the 20
10-year periods
you had a positive
return.

In 18 of the 20
10-year periods
you doubled your
investment.



Source: Capital Group.

Each 10-year period begins on January 1 of the first year shown and ends on December 31 of the final year shown. For example, the first period listed (1936-1945) covers 1/1/36 through 12/31/45. Class F-2 shares were first offered on August 1, 2008. Class F-2 share results prior to the date of first sale are hypothetical based on Class A share results without a sales charge, adjusted for estimated annual expenses. The results shown are before taxes on fund distributions and sale of fund shares. Past results are not predictive of results in future periods. Results for other share classes may differ.

Investors should carefully consider investment objectives, risks, charges and expenses. This and other important information is contained in the fund prospectus and summary prospectus, which can be obtained from a financial professional and should be read carefully before investing.

If used after September 30, 2023, this brochure must be accompanied by a current American Funds quarterly statistical update.

Statements attributed to an individual represent the opinions of that individual as of the date published and do not necessarily reflect the opinions of Capital Group or its affiliates. This information is intended to highlight issues and should not be considered advice, an endorsement or a recommendation.

This content, developed by Capital Group, home of American Funds, should not be used as a primary basis for investment decisions and is not intended to serve as impartial investment or fiduciary advice.

All Capital Group trademarks mentioned are owned by The Capital Group Companies, Inc., an affiliated company or fund. All other company and product names mentioned are the property of their respective companies.

American Funds Distributors, Inc.